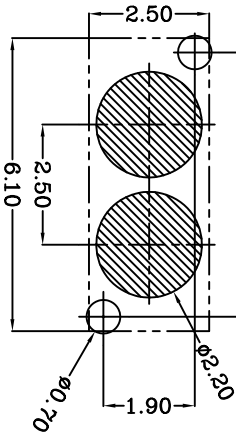
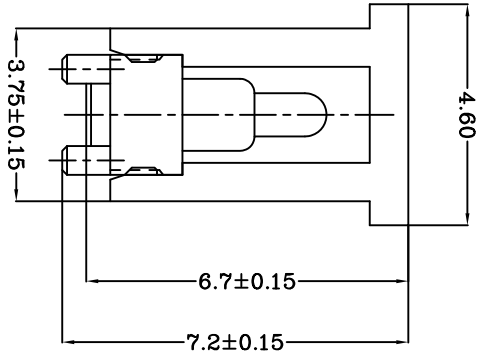


Cap for Vacuum Nozzle



Recommended PCB Layout

Notes:  
1 Material, Housing: PA 4/6 (30% Glass Filled)  
Color: Black.  
Contact: Brass  
2 Mechanical demands:  
Spring force: 0.50±0.20N with 1.1mm stroke.  
Full stroke: 14mm  
Plating Plunger: 0.4µm Au over 1.4µm Ni  
Plating Body: 0.1µm Au over 1.4µm Ni.

LDC	-
DIST	-

LTR	REVISION	APVD	DATE
-	RECORD	-	-

DIMENSIONS IN MM  
TOLERANCES UNLESS  
OTHER SPECIFIED

0	= ±
0.0	= ±0.15
0.00	= ±0.10
0.000	= ±

ANGLE: ±1°  
SURF TEXTURE: 3.2/  
REMOVE BURRS, BREAK  
SHARP EDGES R0.05 MAX  
DD NOT SCALE PRINT

MATL	HT TR	FIN
DWN Jim	APVD Lansing	-
CHK Andy	REL	-
NAME BATTERY	POGD CONNECTOR	2 POSITIONS
SCALE 1:1	DWG ND: C-100390	

三佐株式会社

PART NUMBER	100390-2
-------------	----------

4 3 2 1

USED DN