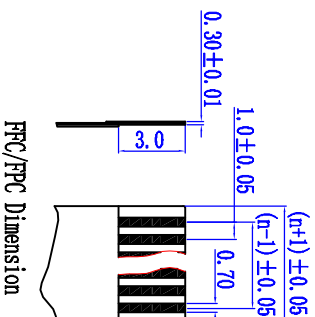
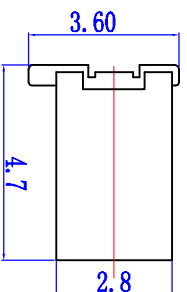
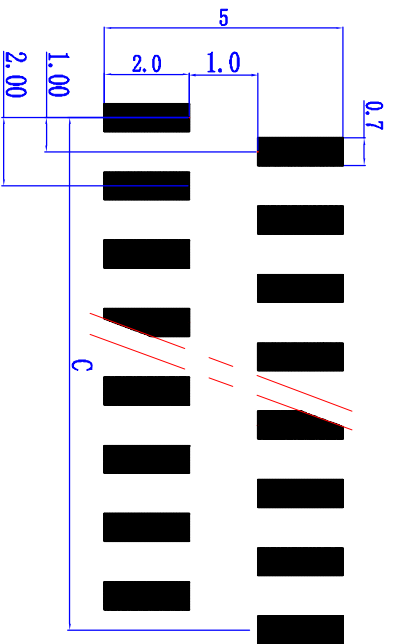
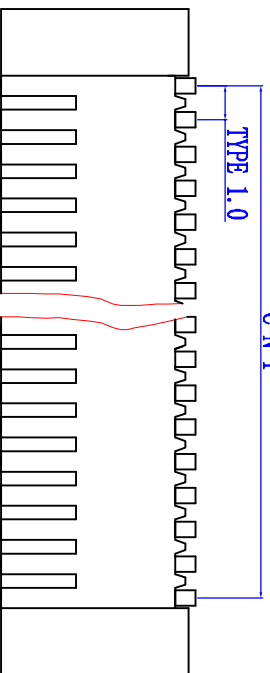
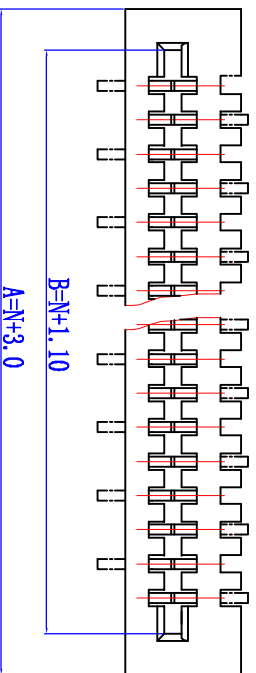


1.0mm FFC/FPC FLAT CABLE CONNECTORS



22	25.5	23.1	21				
21	24.5	22.1	20	40	43.5	41.1	39
20	23.5	21.1	19	39	42.5	40.1	38
19	22.5	20.1	18	38	41.5	39.1	37
18	21.5	19.1	17	37	40.5	38.1	36
17	20.5	18.1	16	36	39.5	37.1	35
16	19.5	17.1	15	35	38.5	36.1	34
15	18.5	16.1	14	34	37.5	35.1	33
14	17.5	15.1	13	33	36.5	34.1	32
13	16.5	14.1	12	32	35.5	33.1	31
*12	15.5	13.1	11	31	34.5	32.1	30
11	14.5	12.1	10	30	33.5	31.1	29
10	13.5	11.1	9	29	32.5	30.1	28
9	12.5	10.1	8	28	31.5	29.1	27
8	11.5	9.1	7	27	30.5	28.1	26
7	10.5	8.1	6	26	29.5	27.1	25
6	9.5	7.1	5	25	28.5	26.1	24
5	8.5	6.1	4	24	27.5	25.1	23
4	7.5	5.1	3	23	26.5	24.1	22
Poles	A	B	C	Poles	A	B	C

1.0-B2-mP 印制线路板
P.C.B Layout

标记	处数	分区	更改文件号	签名	年、月、日
设计			标准化		
审核					
工艺			批准		

深圳市三佐部品电子有限公司			
FPC 1.0 N/P - 1 SMT			
阶段标记	质量	比例	
		10:1	
共 1 张 第 1 张			